

COMMON GARDEN INVERTEBRATES GUIDE

Use the guide below to help you identify garden invertebrates. Don't forget to upload your findings to iNaturalist (or to a Seek account linked to iNaturalist) to make them count towards the City Nature Challenge.

Find out more about
the Chester City
Nature Challenge



Join our iNaturalist
project to see what else
is being spotted

CITY NATURE CHALLENGE IS ORGANIZED BY



7-Spot Ladybird

Coccinella septempunctata



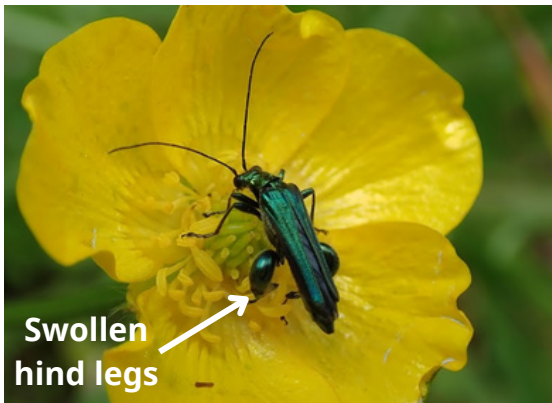
Cockchafer beetle

Melolontha melolontha



Thick-legged flower beetle

Oedemera nobilis



Common green shieldbug

Palomena prasina



Common Earwig

Forficula auricularia



Rosemary Leaf beetle

Chrysolina americana



Cinnabar moth

Tyria jacobaeae



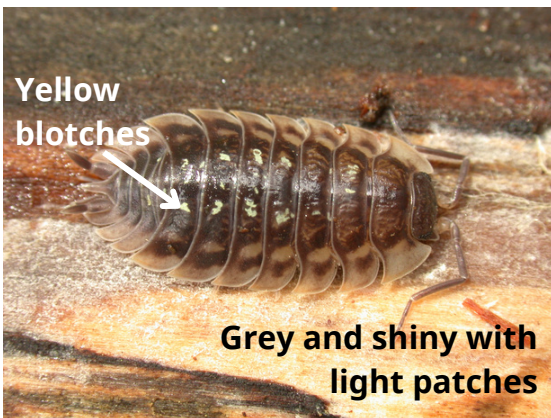
Common garden snail

Cornu asperum



Common shiny woodlouse

Oniscus asellus



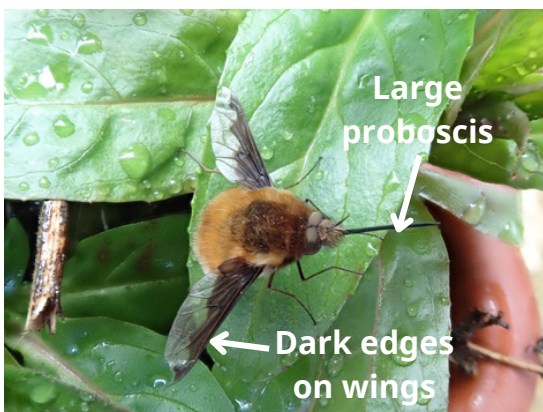
Common rough woodlouse

Porcellio scaber



Dark-edged bee fly

Bombylius major



Tapered dronefly

Eristalis pertinax

